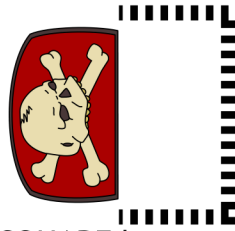
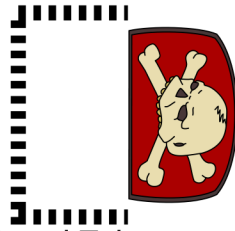
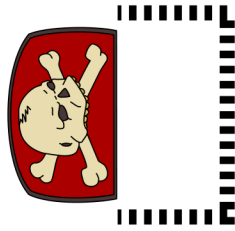
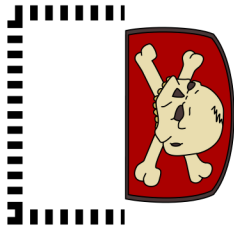
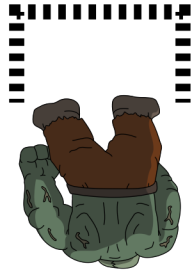
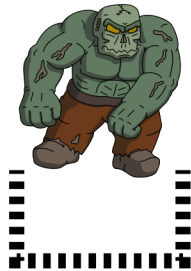


RH WORLDBUILDING

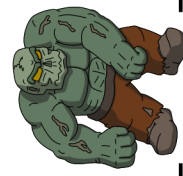
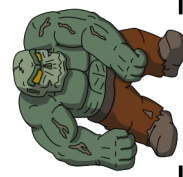
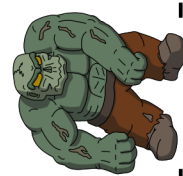
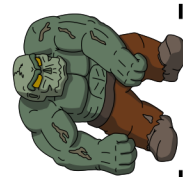
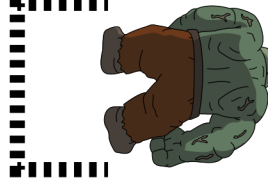
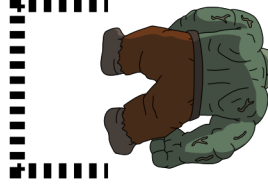
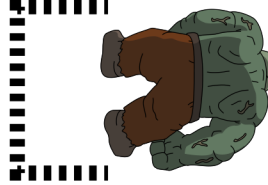
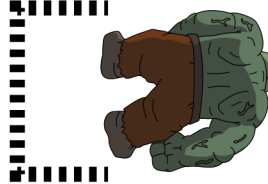
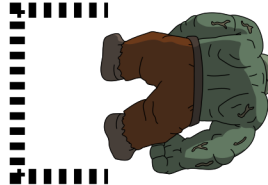
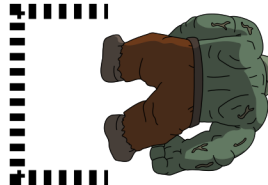
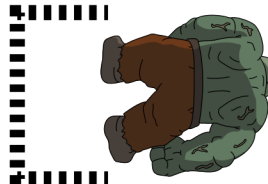
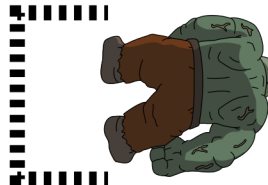
Vampire Covenant Patrol - Page 1

Printing Directions:

- Use the heaviest paper your printer can handle for sturdier Minis
- Print at 100% scale to ensure intended Mini and base sizes
- For best results, try printing at "BEST" quality (in print/printer settings)
- The intended base size is printed for each unit



Wound Tokens on 25x25mm SQUARE bases



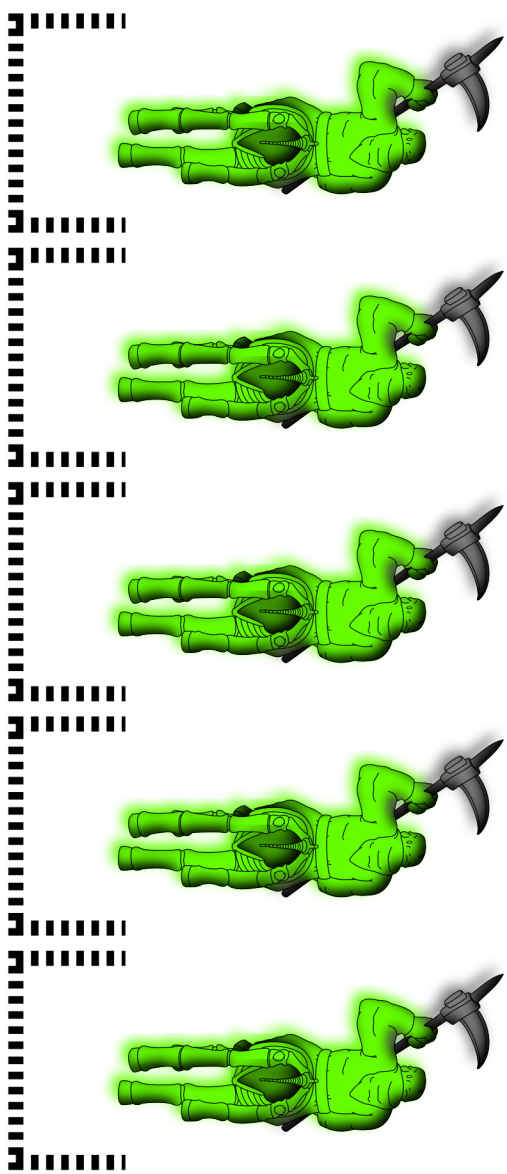
5x2 Ghouls - 20x20mm SQUARE bases

RH WORLDBUILDING

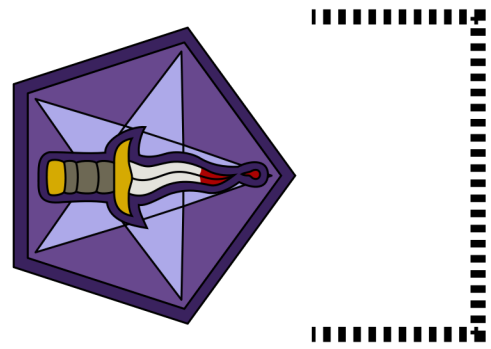
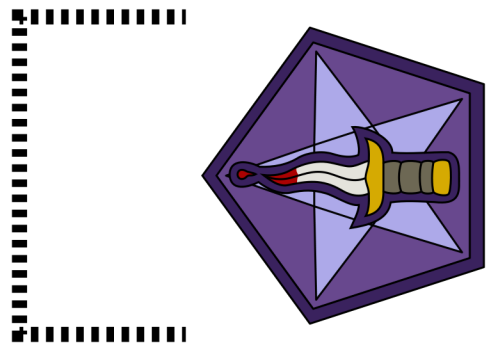
Vampire Covenant Patrol - Page 2



Courtier - 20x20mm
SQUARE base



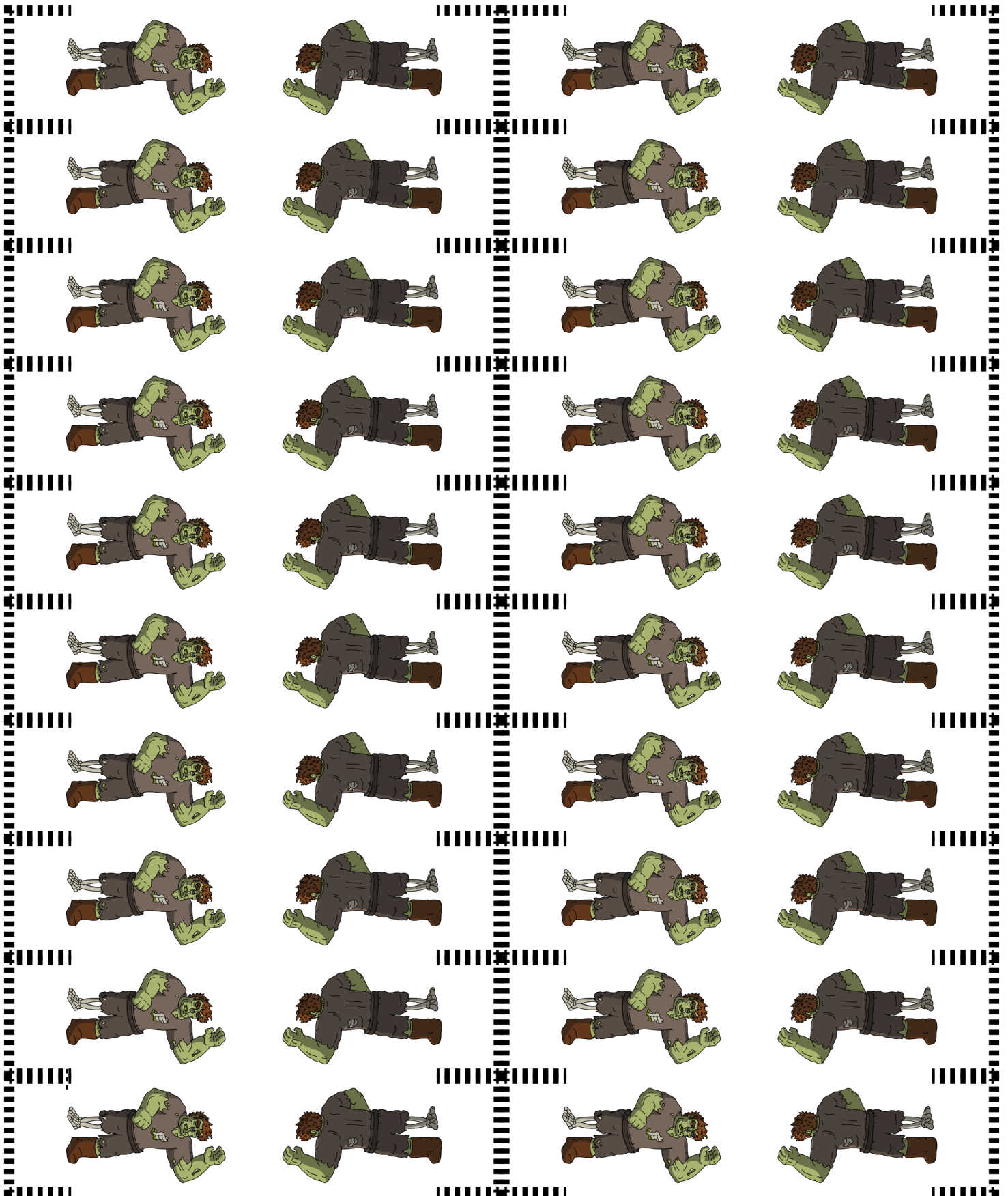
5x1 Spectral Hunters - 25x50mm RECTANGULAR bases



Spell Token on 40x40mm SQUARE base

RH WORLDBUILDING

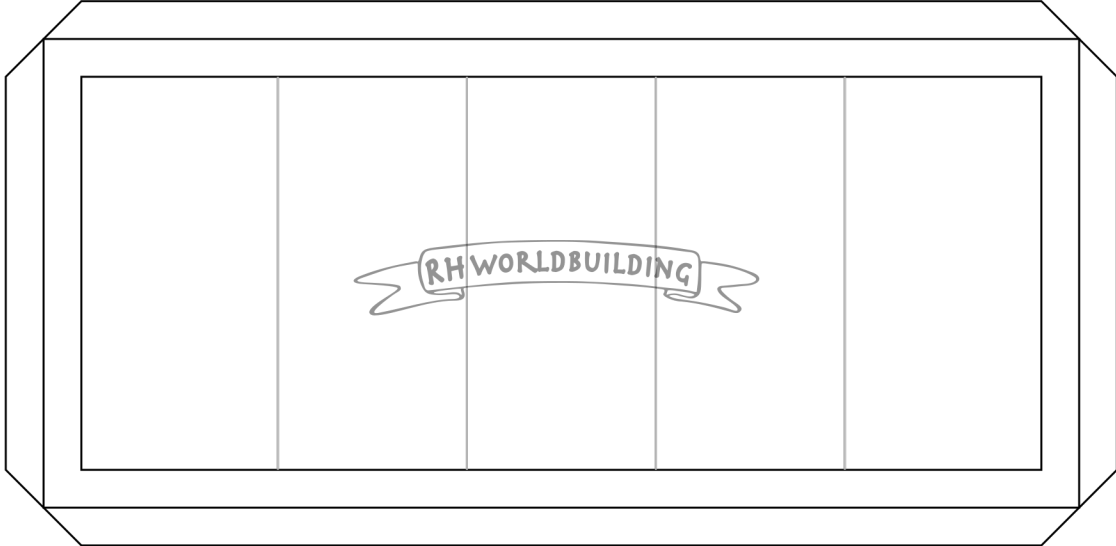
Vampire Covenant Patrol - Page 3



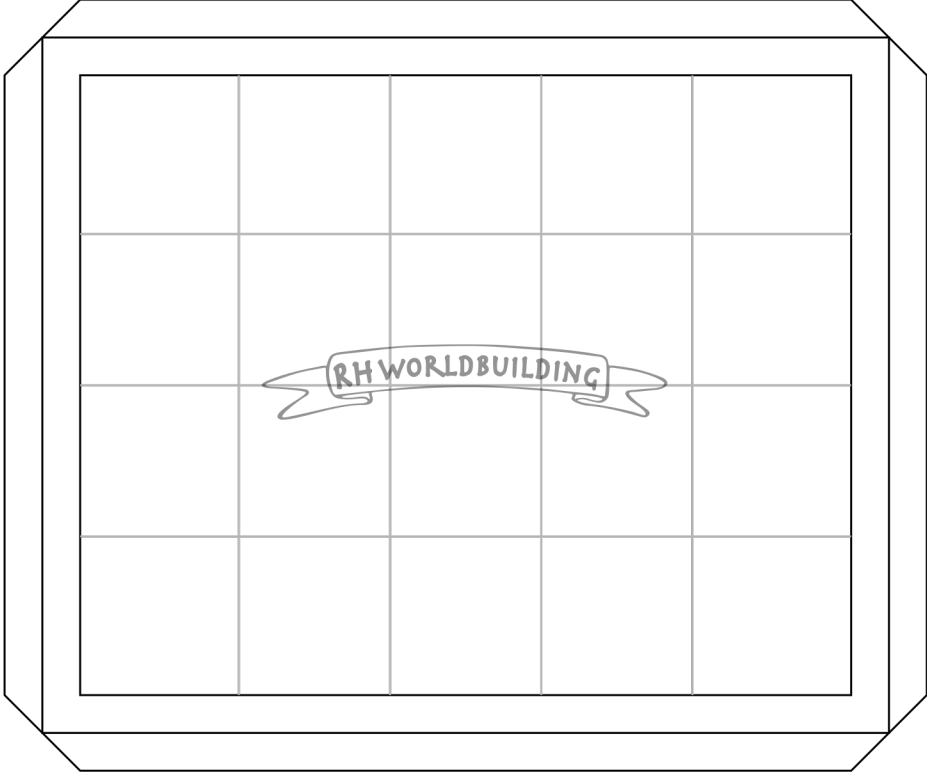
5x4 Zombies - 20x20mm SQUARE bases

Vampire Covenant Essence of War - Movement Trays

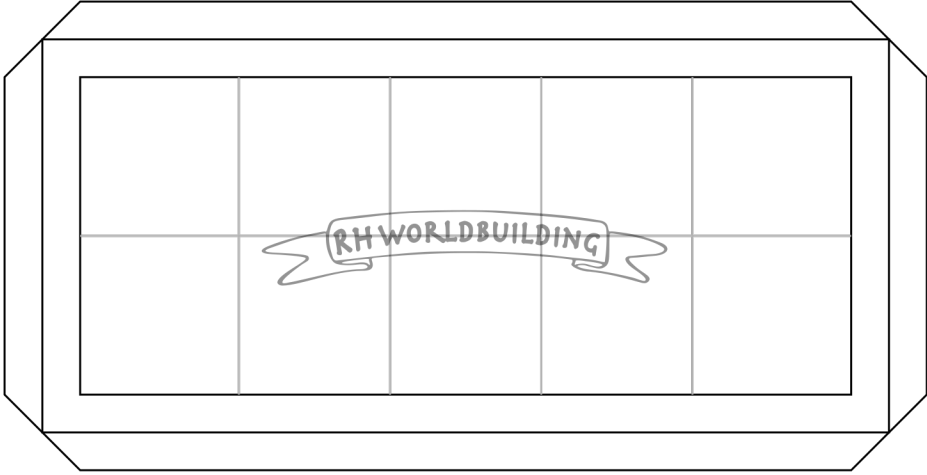
5x1 Spectral Hunters



5x4 Zombies



5x2 Ghouls



Vampire Covenant Essence of War - Bases

Wound Tokens

--	--

Vampire Courtier

--

5x2 Ghouls

5x4 Zombies

5x1 Spectral Hunters

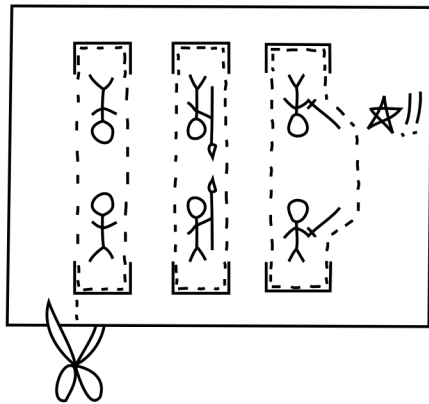
Spell Token

--

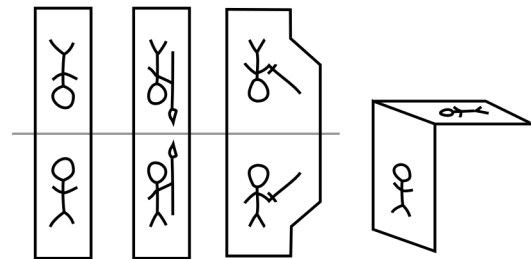
RH WORLDBUILDING

Paper Miniatures How-To Diagram

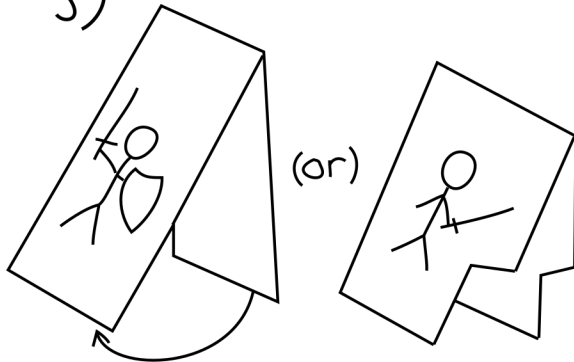
1)



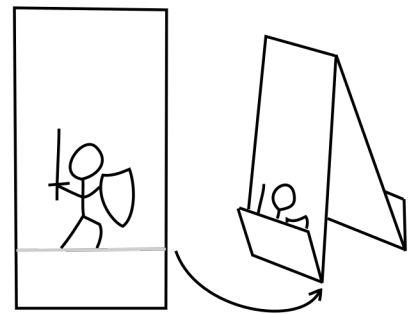
2)



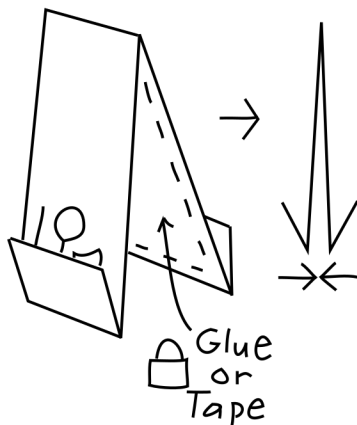
3)



4)



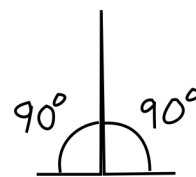
5)



6)



7)



8)

